

Series GBV

2-Piece, Brass Gas Ball Valves

Sizes: 3/8" – 1" (10 – 25mm)

- Brass two-piece body construction
- Available with tee handle or square handle

Models

GBV – Sizes: 3/8" – 1" (10 – 25mm), NPT female connections and tee handle.

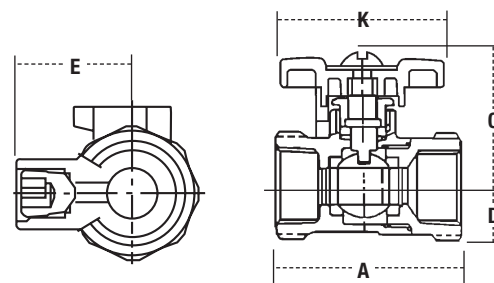
GBV-FL – Sizes: 1/2" x 3/8", 1/2" x 1/2", 3/4" x 15/16" (15 x 10, 15 x 15, 20 x 24mm), Female NPT x Flare connections and tee handle.

GBV and GBV-FL – rated 20°F – 125°F (-29° – 52°C). CSA approved @ 1/2, 2 and 5psi (3.4, 13.8, 34.5 kPa). UL listed @ 5psi (34.4 kPa).

For additional information, reference literature ES-GBV.



GBV



Dimensions — Weights

MODEL	SIZE (DN)		DIMENSIONS										WEIGHT	
			A		C		D		K		E			
	<i>in.</i>	<i>mm</i>	<i>in.</i>	<i>mm</i>	<i>in.</i>	<i>mm</i>	<i>in.</i>	<i>mm</i>	<i>in.</i>	<i>mm</i>	<i>in.</i>	<i>mm</i>	<i>lbs.</i>	<i>kgs.</i>
GBV	3⁄8	10	1 13⁄16	45	1 3⁄8	37	3⁄8	10	1 3⁄4	45	—	—	.41	.19
GBV	1⁄2	15	2 3⁄16	56	1 3⁄8	37	3⁄8	10	1 3⁄4	45	—	—	.51	.23
GBV	3⁄4	20	2 7⁄16	60	1 7⁄16	42	9⁄16	15	1 3⁄4	45	—	—	.73	.33
GBV	1	25	2 7⁄8	73	1 9⁄16	40	1 3⁄16	20	1 3⁄4	45	—	—	.59	.27
GBV-FL	1⁄2 x 3⁄8	15 x 10	2 7⁄16	62	1 1⁄4	32	1⁄2	13	1 3⁄4	45	—	—	.53	.24
GBV-FL	1⁄2 x 1⁄2	15 x 15	2 1⁄2	64	1 1⁄4	32	1⁄2	13	1 3⁄4	45	—	—	.58	.26
GBV-FL	3⁄4 x 15⁄16	20 x 24	3 1⁄16	77	1 7⁄16	36	5⁄8	16	1 3⁄4	45	—	—	.86	.39

Series GBV-1

One Piece Gas Ball Valves

Sizes: 1/2" and 3/4" (15 and 20mm)

- Sizes 1/2" and 3/4" (15 and 20mm) NPT female connections.
- Blowout proof stem design.

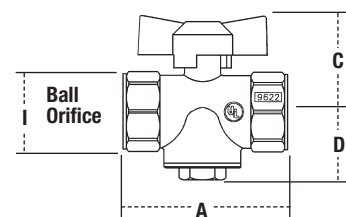
Features

- Blowout proof stem design
- One-piece body
- UL approved @5psi (34.4 kPa)
- Approved by CSA @ 1/2, 2 and 5psi (3.4, 13.8, 34.5 kPa). UL Listed @ 5psi (34.4 kPa).
- Capacity: 1/2" @ 295 ft.3/hr., 3/4" @ 760 ft.3/hr
- Tested under Standards Z21.15 IAS Requirement

For additional information, reference literature ES-GBV-1.



GBV-1



Dimensions — Weights

SIZE (DN)		DIMENSIONS						WEIGHT			
		A		C		D		I			
<i>in.</i>	<i>mm</i>	<i>in.</i>	<i>mm</i>	<i>in.</i>	<i>mm</i>	<i>in.</i>	<i>mm</i>	<i>in.</i>	<i>mm</i>	<i>lbs.</i>	<i>kgs.</i>
½	15	2⅝	59	1⅞	37	1⅝	24	½	15	.41	.19
¾	20	2⅞	68	1⅝	41	1⅞	29	⅝	15	.65	.30

Note: This valve is not to be used as a mainline shutoff valve. Refer to literature ES-FBV-3 for mainline shutoff applications.