

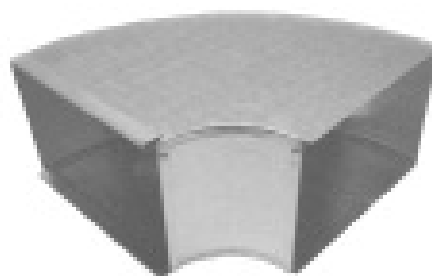
- 12", 30", 48", 60", and 96" Lengths
- Furnished in Button Snaplock with S-Cleat & Drive Connections
- Cross Broken for Extra Stiffening Strength



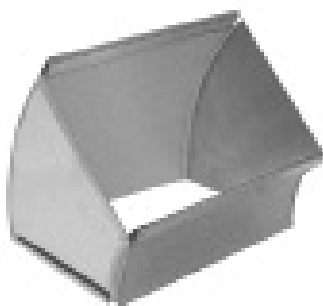
**No. TD**  
TRUNK DUCT



**No. 13**  
FLAT 45° ANGLE



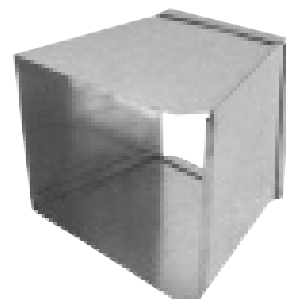
**No. 14**  
FLAT 90° ELBOW



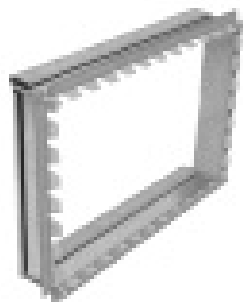
**No. 15**  
VERTICAL 45° ANGLE



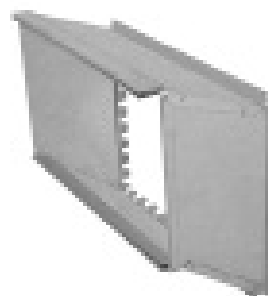
**No. 16**  
VERTICAL 90° ELBOW



**No. 17**  
TRANSITION



**No. 20**  
STRAIGHT COLLAR



**No. 23**  
OFFSET COLLAR