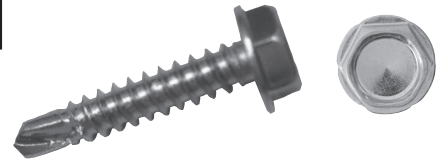


SUBMITTAL RECORD _____
 JOB _____
 LOCATION _____
 SUBMITTED TO _____
 SUBMITTAL PREPARED BY _____
 APPROVED BY _____
 DATE _____



Submittal Form Pro Point Screws



DESCRIPTION

Several common methods such as rivets, screws, and spot welding are used to fasten materials to ductwork. Self-drilling screws have an integral drill point which creates a large hole for tapping. This allows the screws to be used on heavy gages of steel. The maximum total thickness of steel that the self-drilling screw can be used with is determined by the drill point.

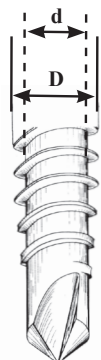
SCREW FEATURES

- Conformance - Meets or exceeds IFI-113 (Revised: August 1, 2007) specifications for Type BSD screws
- Material - Cold heading quality steel wire / Stainless 410 series
- Corrosion Resistance - Zinc plated
- Hardness - Case hardened to Rockwell C52 - 58
- Head Configuration - Hexagonal unslotted

PRO POINT SCREWS										
ITEM SIZE	DRIVER SIZE	DRILL PT. SIZE	MAX. DRILL CAPABILITY	HUNDRED PACK (PPC) ITEM#	FIVE HUNDRED PACK (PPF) ITEM#	THOUSAND PACK (PPT) ITEM#	BUCKET PACK (PPP)		BULK PACK (PPB)	
			DEC.				ITEM#	QTY.	ITEM#	QTY.
8 x 1/2	1/4	2	.100 in	14177	14340	14185	15159	5 TH	15127	10 TH
8 x 5/8	1/4	2	.100 in	14178	N/A	14186	15160	5 TH	15128	10 TH
8 x 3/4	1/4	2	.100 in	14179	14342	14187	15161	4 TH	15129	10 TH
8 x 1	1/4	2	.100 in	14194	14195	14196	15165	3 TH	15174	5 TH
10 x 1/2	5/16	3	.110 in	14180	14343	14188	15162	4 TH	15130	8 TH
10 x 5/8	5/16	3	.175 in	14181	N/A	14189	15163	3 TH	15131	5 TH
10 x 3/4	5/16	3	.175 in	14182	14345	14190	15164	3 TH	15132	5 TH
10 x 1	5/16	3	.175 in	14183	14346	14191	15166	3 TH	15133	5 TH
12 x 3/4	5/16	3	.210 in	14184	N/A	14192	15175	3 TH	15134	5 TH
12 x 1	5/16	3	.210 in	14270	14271	14272	15184	2.5 TH	15183	4.5 TH
12 x 1-1/2	5/16	3	.210 in	14277	14275	14273	15186	2 TH	15185	3.5 TH
14 x 1-1/2	5/16	3	.210 in	14278	14276	14274	15206	2 TH	15204	2 TH

STAINLESS PRO POINT SCREWS										
10 X 3/4SS	5/16	3	.175 IN	14199	14200	14213	15053	3 TH	15054	5 TH

TH = Thousand



DIMENSIONS OF THREADS AND POINTS FOR SELF-DRILLING TAPPING SCREWS							
Nominal Size or Basic Screw Diameter	Threads per Inch	D		d		Minimum Torsional Strength (lb. in.)	
		Major Diameter		Minor Diameter			
		Max	Min	Max	Min		
4 0.1120	24	0.114	0.110	0.086	0.082	14	
6 0.1380	20	0.139	0.135	0.104	0.099	24	
8 0.1640	18	0.166	0.161	0.122	0.116	42	
10 0.1900	16	0.189	0.183	0.141	0.135	61	
12 0.2160	14	0.215	0.209	0.164	0.157	92	
1/4 0.2500	14	0.246	0.240	0.192	0.185	150	

A sampling from every skid of Duro Dyne screws is rigorously tested in house. The Duro Dyne screw standards exceed the IFI published standards for consistency and quality in form and function. Our screws are designed and manufactured under the strictest QC guidelines, to ensure we have the highest quality and most consistent screws offered to the industry.

SUGGESTED SPECIFICATIONS

Self-drilling and tapping screws shall meet or exceed Industrial Fasteners Institute standard IFI-113 and shall be code _____ size _____ as supplied by Duro Dyne Corporation.

Duro Dyne East Division, Bay Shore, NY
 Duro Dyne Midwest Division, Hamilton, OH
 Duro Dyne West Division, Fontana, CA
 Duro Dyne Canada, Lachine, Quebec, Canada

631-249-9000 Fax: 631-249-8346
 513-870-6000 Fax: 513-870-6005
 562-926-1774 Fax: 562-926-5778
 514-422-9760 Fax: 514-636-0328

www.durodyne.com E-mail: durodyne@durodyne.com



©2018 Duro Dyne Corporation
 Printed in USA 09/2018
 B0006000